

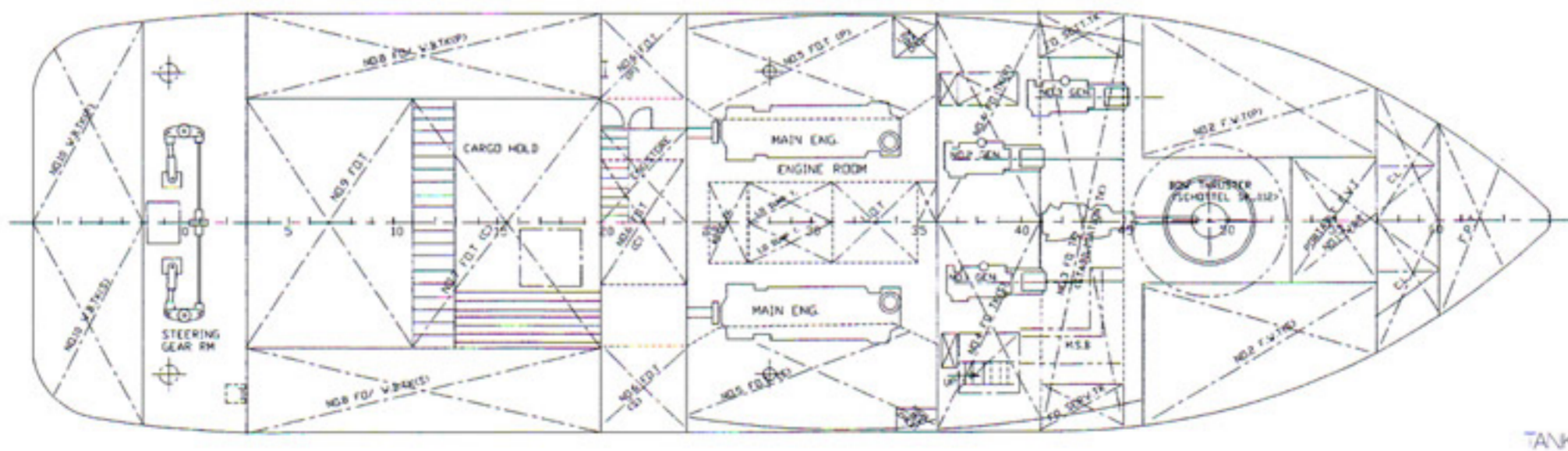
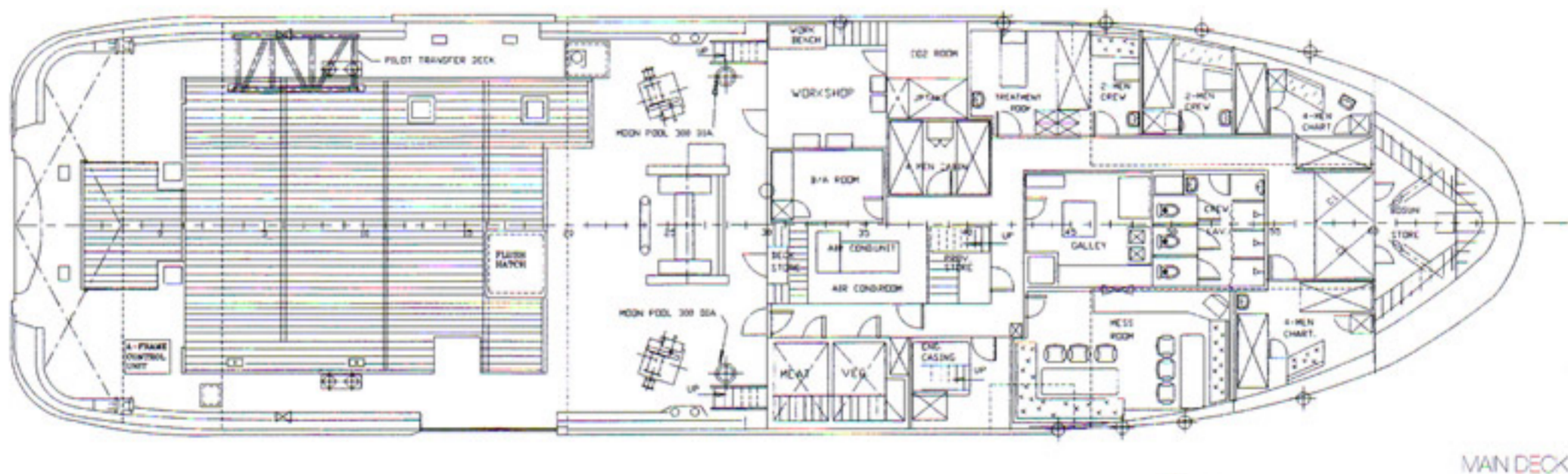
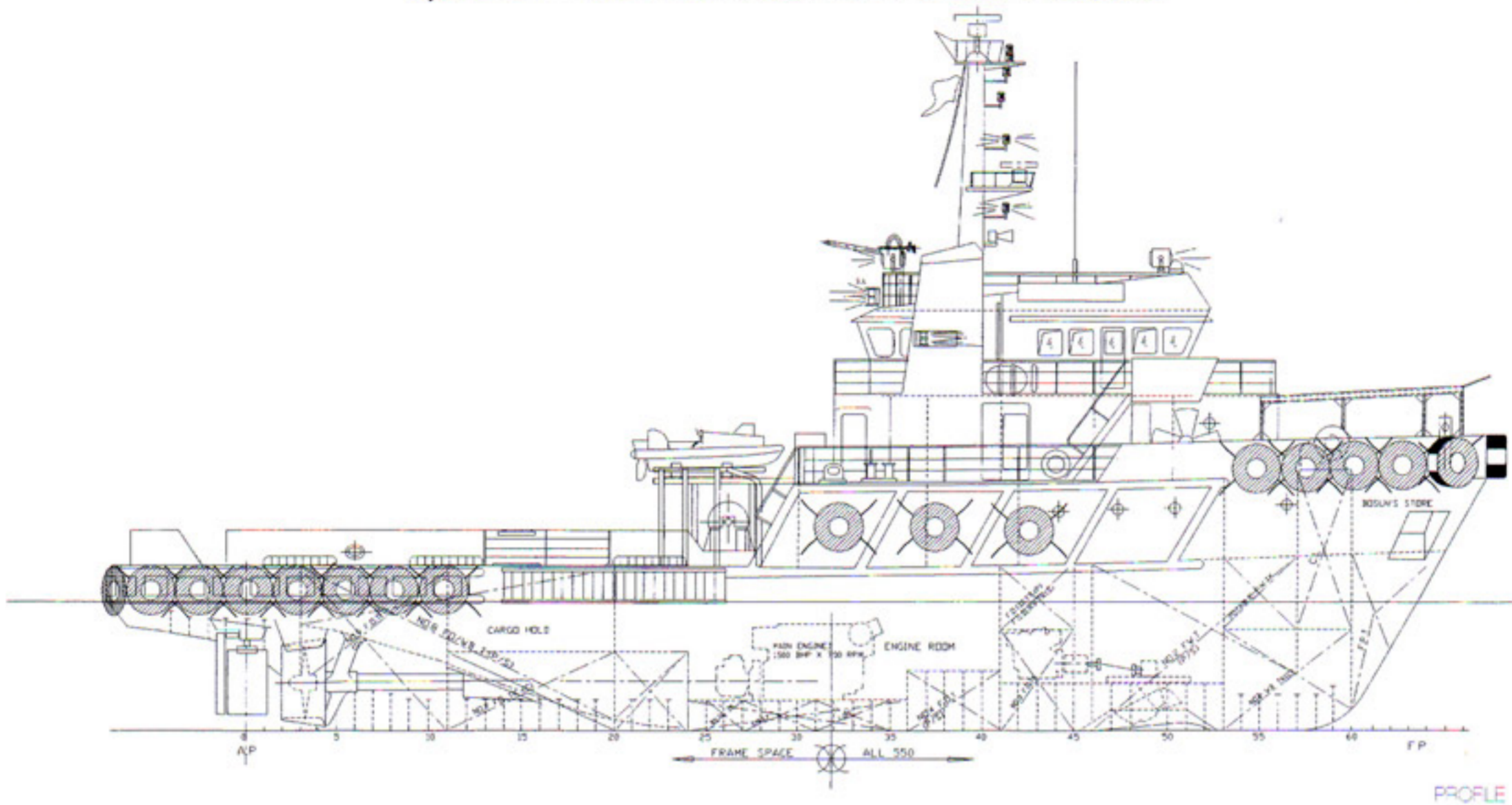


Erna

3,000 BHP

ERNA

3,000 BHP TUG / ROV / SURVEY / UTILITY VESSEL



All details provided in this brochure are given without guarantee.

ERNA

3,000 BHP Tug / ROV / Survey / Utility Vessel

Revision: 001/Sep/2002

BUILT

Imamura Zosen, Japan, March 1982

CALL SIGN

9V5920

CLASSIFICATION

ABS + A1 (E) + AMS Ocean-going work vessel

FLAG

Singapore

IMO No.

8122103

DIMENSIONS

Length, overall: 41.00 m
Breadth, moulded: 11.00 m
Depth, moulded: 4.80 m
Summer Draft: 4.22 m
Summer Draft: 3.90 m
GRT: 591
NRT: 177

MACHINERY

Main engines: 2 x 1500 BHP, Yanmar G260-ET engines
Total 3000 BHP at 700 RPM.
Fixed pitch propellers in Kort nozzles
Rudders: Trailing flap, for increased manoeuvrability
Generator: 3 generators 120 kW, 440V, 60Hz
Schottel/Thruster: 1 x 360 BHP developing 3 tonnes thrust in any direction

PERFORMANCE

Speed: Maximum Speed: 12.5 kts/12.0 M Tonnes/day
Normal Speed: 10.0 kts/7.0 M Tonnes/day
Survey Speed: 2.1 M Tonnes/24 hours ROV on schottel unit

ROV/SURVEY

Main engines are fitted with variable speed clutches for sustained, slow speed manoeuvres
Omni-directional, 360 degrees, bow thruster type, Schottel Cone jet - SKJ112
Hydrophone penetrations
Goose-neck to wheelhouse top
Deck power outlets: 2 x 440V x 30A / 2 x 220V x 50A
Work area with desks/power sockets in the wheelhouse for survey equipment

TOWING AND ANCHOR HANDLING

Bollard Pull: 36 tonnes
Winch: Type Robertson, 20/40 tonnes, single drum, hydraulic, with spooling gear
Line Pull: 40 tonnes
Anchor Handling: 700 m x 44 mm wire
Stern Roller: 2.2 m x 1.3 m (dia.), 100 tonnes SWL
Brake Capacity: Type Robertson, 20/40 tonnes, single drum, hydraulic, with spooling gear

DECK MACHINERY

Tuggers: 2 x 5 tonnes, hydraulic, 15 m/min
Capacity 200 m x 20 mm wire
Anchor/Chain: 2 x 900 kg, type AC 14 anchors each with 412 m x 32 mm chain, plus 1 spare anchor onboard
Crane: Type Atlas Weyhausen 5000H
SWL 1 tonne at 6.80 m outreach
SWL 5 tonnes at 3.35 m outreach

DISCHARGE PUMPS

Potable Water: 20 cubic metres/hour at 30 m head
Fuel: 100 cubic metres/hour at 30 m head

CAPACITIES

Clear Deck Space: 18.5 m x 8 m = 148 Square metres
Fuel: 384 cubic metres
Potable Water: 240 cubic metres
Ballast: 77 cubic metres
Slop Tank: Installation of deck lines and pumps to 86 cubic metres of slops for storage and discharge to shore facilities
Deadweight: 627 tonnes
Ship's Stores: Freezer 5.6 cubic metres (200 cu. ft.)
Cooler 5.6 cubic metres (200 cu. ft.)

ELECTRONICS

Radar: 1 x Furuno, FR1510D, 72 miles
Auxiliary Radar: 1 x FAR 2815, ARPA

Auto Pilot: Tokyo Keiki with Sperry ES11 gyro compass
Echo Sounder: Simrad Ed 162
Satellite Navigation: Furuno GPS GP.70, Mark II
Communications: G.M.D.S.S. (Global Maritime Distress & Safety System)
2 x SSB
2 x VHF
2 x Inmarsat C 456336440 / 456336450
3 x VHF (portable)
2 x SART
1 x EPIRB
1 x Navtex

EXTERNAL FIRE FIGHTING

Capacity: 200 cubic metres/hour at 90 m head
Monitors: 2 on wheelhouse top, each 100 cubic metres/hour
Spray Boom: 2 x 7.5 m booms with dispersant delivered at 150 litres/min per boom
Foam/Dispersant: 4 cubic metres integral tank

DIVING SUPPORT

Service Air Compressor, 450 CFM at 7 bar
Divers air bottle compressor, 80 litres/min
Workshop with various equipment
Dry cargo hold, 81 cubic metres (2860 cu.ft)
Welding machine, 400 AMPS

ACCOMMODATION

Officers and Crew: 5 x 1 berths
7 x 2 berths
3 x 4 berths

Total 31 berths

1 x mess/rec.room
1 x galley

All living space fully air-conditioned.

MISCELLANEOUS

1. Wood sheathed main deck.
2. Zodiac inflatable workboat.
3. Statutory life buoys, life jackets, pyrotechnics.
4. Search light and deck flood lights.
5. P.A. System.
6. TV and video.
7. 8 man Esvagt Fast Rescue Craft fitted, launched using vessel's crane